

TRIBECA

# GREGORY HILLS. NSW.

**Lot 4032** - Fallow Street, Gregory Hills, NSW 2557



HOUSE & LAND  
**\$649,980** FIXED PRICE

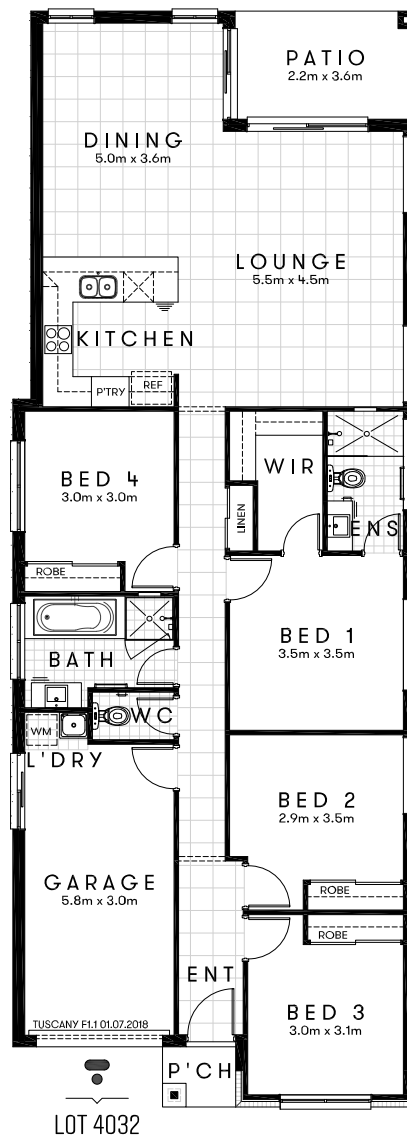


Approx. House Area 170m<sup>2</sup>  
Land Area 319m<sup>2</sup>

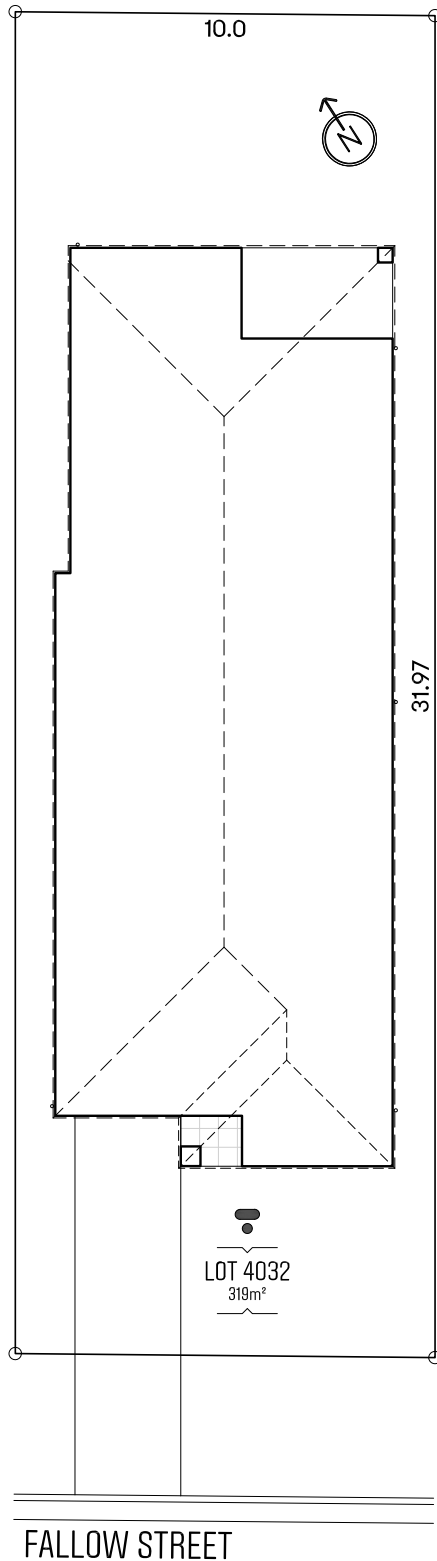
House Price \$290,980  
Land Price \$359,000

# TRIBECA

Design Tuscan F1.1 Approx. House Area 170m<sup>2</sup>  
Land Area 319m<sup>2</sup> House Price \$290,980 Land Price \$359,000



LOT 4032



## HOME OVERVIEW

**Design** Tuscan F1.1

**Approx. House Area** 170m<sup>2</sup>

**Land Area** 319m<sup>2</sup>

**House Price** \$290,980

**Land Price** \$359,000

## PREMIUM INCLUSIONS

- Fixed site costs, no surprises
- Reverse cycle split system air conditioner to main living area and master bedroom
- 2590mm raised ceiling height
- 20mm manufactured stone bench top to kitchen, bathroom and ensuite
- Under-mount sink to kitchen
- Quality stainless steel appliances with 5 year warranty
- Carpeted and tiled throughout
- Superior fittings and fixtures
- Floating vanities to bathroom and ensuite on applicable plans
- Niches to bathroom and ensuite showers
- Flyscreens provided to all windows  
quality roller blinds throughout
- Covered alfresco with fan on applicable plans
- Generously turfed and landscaped
- Rainwater tank to toilets, cold washing machine & 1 garden tap
- Colour through concrete driveway
- Fully fenced
- Clothesline & letterbox
- 3 coat paint system
- All homes include BASIX requirements
- Professionally selected external and internal colours and materials

## A PLACE OF BRILLIANT OPPORTUNITY

NESTLED WITHIN THE BOOMING SUBURB OF  
GREGORY HILLS, JUST 50KM SOUTH OF THE SYDNEY  
CBD, DREAMSCAPE OFFERS A NEW NEIGHBOURHOOD  
OF ARCHITECTURALLY DESIGNED HOMES, GREEN  
OPEN SPACES AND FRIENDLY COMMUNITY LIVING.

Dreamscape is perfectly placed with shopping, schools, parks and everything you need at your door, balancing quiet village life with easy access to the city. Designed and delivered by Tribeca, Dreamscape is part of a larger staged release in the area. This thriving precinct has already seen hundreds of purchasers take advantage of a unique and dynamic location, ensuring that Dreamscape will be a vibrant new addition to a flourishing community for generations to come.

